

EPC FOCUS

1st issue

Concentrated Energy News

N°1 • First Semester 2012 • www.epc-groupe.com

SPECIAL FEATURE

EPC, CITIZEN OF THE WORLD!

ZOOM IN... Explosives 4-5

The Sydvaranger project:
A tale of warmth and ingenuity!

FOCUS ON... Environment 10

- Environmental award for EPC-UK!
- About the Saint-Martin-de-Crau lagoon

ZOOM IN... Drilling and blasting 7

EPC conquers space by being down-to-earth!

EDITORIAL

This Magazine is the medium for sharing news from the EPC Groupe and the communication platform for our team.

Inside you will discover that we are a successful independent international group involved in a variety of activities based on localised skills and solutions.

The "Groupe" now believes it is the right time to share it's fascinating 120 years history where people are the important resource.

In this first issue, we will go to the heart of our business - explosives - and mention our other activities: demolition and drilling/blasting.

Our company's strategy and identity are illustrated through this magazine where you will find articles about safety, environment and training.

Our teams have been instrumental in the publishing of EPC Focus - Thank you for your contribution.

The editorial team



Summary :

SPECIAL FEATURE

EPC GROUPE, CITIZEN OF THE WORLD !



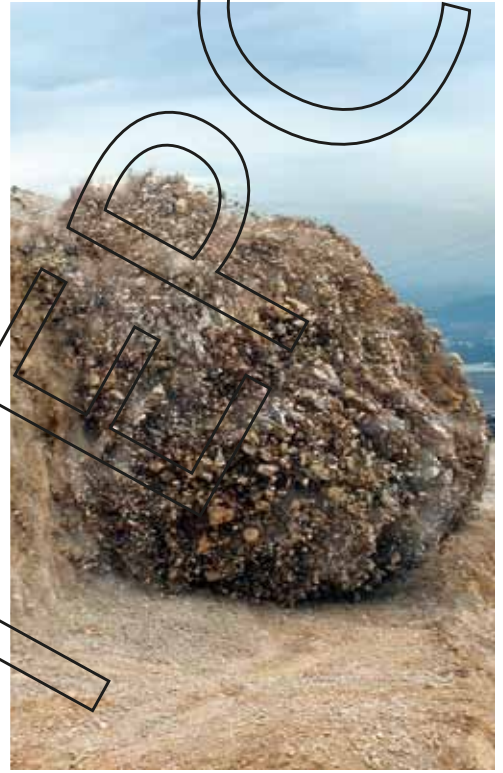
ZOOM IN... Activities

- 4-5 Explosives
- 7 Drilling and blasting
- 11 Demolition
- 15 Diversification

FOCUS ON... Themes

- 6 Safety
- 10 Environment
- 12 Development
- 12 Training
- 14 Innovation

- 13 Portrait
- 15 FLASH News



CHAIRMAN'S MESSAGE

2011 marks the continuity of the Groupe's drive to simplify its structure. The merger of 5 french drilling and blasting companies into one - ALPHAROC - is the most current illustration. Since 2008 the EPC brand is now clearly distinguished throughout all our entities who carry the colours with pride.

The EPC Groupe's core values over the years is safety and customer focussed services, this has been at the heart of our success.

We aim to provide all those who trust us with complete and integrated solutions. That is why we created EPC INNOVATION in 2011, which develops new working methods and innovative products.

Meanwhile, we continue to seize every opportunity to develop internationally and take into account every parameter to focus our energy on lucrative and ambitious projects. That is why we opened an explosives factory in Somman, Saudi Arabia.

True to its values, EPC Groupe will keep up the good work in 2012. You are holding EPC Focus in your hands. This biannual magazine has been deliberately conceived to connect our teams to all the stakeholders in our business for the benefit of us all.

I hope you enjoy our new media concept.

Paul de Brancion
Chairman

EPC works in polar conditions for the very first time

EPC NORGE

A TALE OF WARMTH AND INGENUITY.



► With the Sydvaranger project, EPC isn't bold.

EPC discovered that working in polar conditions is a very hard situation to manage. Operators and equipment are under great strain with temperatures as low as -40°C , with layers of snow as high as one meter and icy roads making transport difficult.

The EPC team had to learn to cope with extremely short days (3 to 4 hours of daylight), long supply distances (between 300 km and 600 km) and very complex blast plans (small diameter drilling, numerous holes in one blast). The team adapted their methods of work to the conditions.

These included:

- Heated garages,
- Extreme winterization of truck equipment (e.g. tyres, lights, engine management...),
- Specific heating or insulation systems for storage units and utilities,
- A dual hose pumping system to optimize charging times.

All these measures, combined with our team's skills, make it possible for EPC to be effective and efficient, even in polar conditions.

Demonstrating our teams' skills, the Sydvaranger project, won by EPC NORGE in 2008, was described as an "industrial fairy tale" by the Norwegian Prime Minister.



THE MORSE TECHNOLOGY IS HAVING A BLAST!



► Safer and more productive, the MORSE concept is always going deeper.

An explosive concept for underground works.

With the excavation of more than 21 km of tunnel since 2005, EPC FRANCE and its MORSE technology have met with technical and commercial success. In the late 90s, the R&D department of EPC FRANCE (now called EPC INNOVATION) developed a new on-site production concept designed for underground works. The name "MORSE", which is not a reference to the French translation for walrus, but is in fact the French acronym for "Pumping and Explosive Sensitisation Unit".

The MORSE technique in the spot light!

Today in France, thanks to the MORSE technology, 95% of the work needed by building and public works companies, requiring drilling and blasting underground work is being awarded to EPC FRANCE.



“In France, thanks to the MORSE technology, 95% of underground drilling and blasting work is being awarded to EPC FRANCE.”

This innovative technology is now here to stay: when faced with major problems in logistics and regulations to ship class 1 products to the Reunion Island (Indian Ocean), Nitro Bickford – now EPC FRANCE – proposed to the GIE Rivières et Pluies consortium the implementation of the MORSE technology. The first blasts took place in July 2005 marked the birth of MORSE for EPC FRANCE.

Since then, the MORSE concept has been used in numerous operations. Here are a few examples since 2006:

- **The access decline of La Paz:** access tunnel to the Lyon Turin rail work (LTF) - 2 x 57 km. 2.5 km excavated from Dec. 2006 to Jan. 2009 and 385 tonnes of Nitram TX1 (SPIE BATIGNOLLES, SOTRABAS).
- **The Chassolet tunnel:** twin-tube roadwork (A89 highway)-1.5 km excavated from Apr. 2010 to May 2011 and 212 tonnes of Nitram TX1 (RAZEL, SPIE BATIGNOLLES).
- **Talent tunnel:** twin-tube roadwork - 1.5 km will be excavated between July 2011 to mid 2012 (BEC FAYAT Groupe).

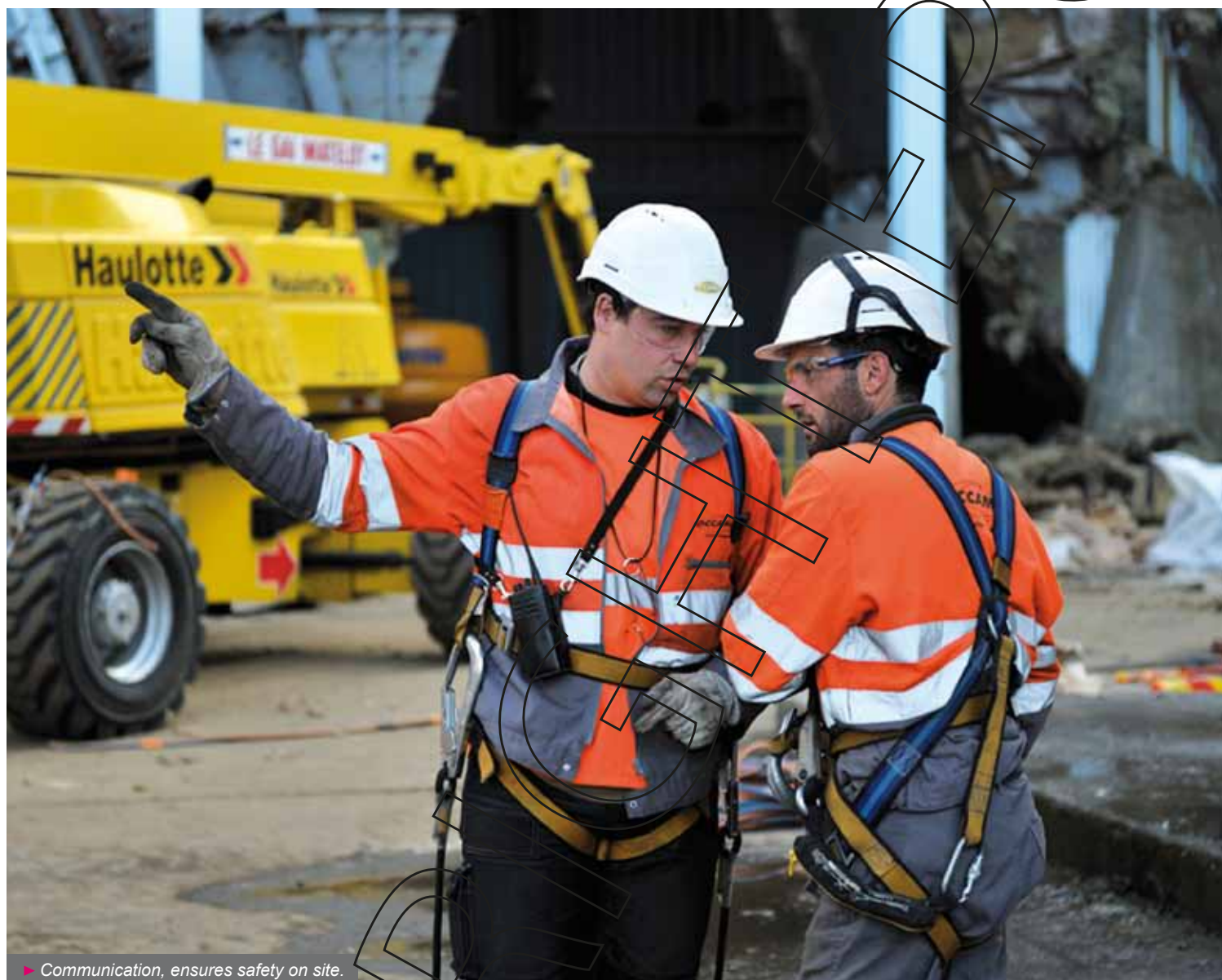
The MORSE concept has numerous advantages:

1. **Safety:** the miners only need to manipulate the minimum amount of class 1 products (detonators and boosters) which only become explosives once placed in the hole.
2. **Security:** noticeable reduction of the quantity of class 1 products stored on-site.
3. **Productivity:** the blasting cycle onsite is improved thanks to the time saved by the technology.

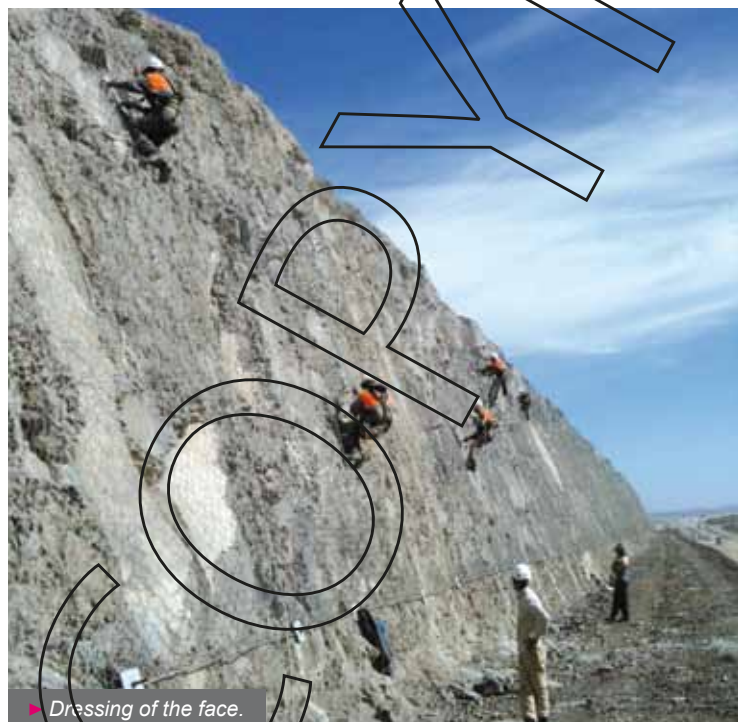
MORSE: Future Developments

The MORSE concept has further environmental benefits. EPC is developing a maritime application with Trafordyn a company which provides an offshore blasting solution of which the MORSE will be used to blast the seabed. The MORSE technology is also being used to mine nickel ore for the Label Explo company.

HEALTH SAFETY & ENVIRONMENT, A MULTICULTURAL TEAM.



► Communication, ensures safety on site.



► Dressing of the face.

In October every year, the Health Safety and Environment officers of the Groupe meet to establish the continuing improvement in the safety culture. This meeting provides each officer the opportunity to establish key relationships and share all the good practices implemented in their businesses and countries.

In this forum the officers propose the HSE objectives for the year ahead after receiving guidance from the EPC senior management team (steering committee). These HSE objectives are then ratified by the senior management team in January. This whole process ensures 360 degree feedback and buy-in for the implementation of these objectives.

In October 2011, the HSE officers were represented by:

- 25 participants,
- 15 countries,
- 9 languages.

At the end of the meeting, a visit of the EPC FRANCE factory, which is located in Saint-Martin-de-Crau, had been arranged for the HSE officers.

At the last meeting the whole HSE team visited a local "bull fighting" farm where they enjoyed a meal of typical Provencal dishes.

LESS BLASTS... BETTER BLASTS!

“Every hole gets its own load and analysis of the blast.”

Interview with Denis Simon, Operation Manager MDF, Hervé Arnoux and Jean-Paul Lopes, ALPHAROC.

The MDF (Magnesia Dolomite France) quarry of the LHOIST group is located in northern France, close to Boulogne-sur-Mer. It provides dolomite amongst karsts and faults filled with clay, which makes blasting difficult. The quarry is surrounded by villages and therefore important environmental constraints – fly-rocks, complaints for noise and vibrations, less productivity...

In May 2010, after a few tough years due to declining productivity and environmental nuisance, the quarry decided to subcontract blasting and drilling to ALPHAROC an EPC Groupe subsidiary.

The first aim was to regain the trust of the residents by minimising the inconvenience whilst still improving productivity.

For this to happen, ALPHAROC implemented the technique of “controlled blasting”, developed in collaboration with EPC FRANCE.

Every hole gets its own load and analysis of the blast thanks to:

- 3D front profiling
- Monitoring of the deviations with inclinometer measurements
- Conceptualisation of the blast, tailor-made and based on energy monitoring thanks to the EXPERTIR 3D® software

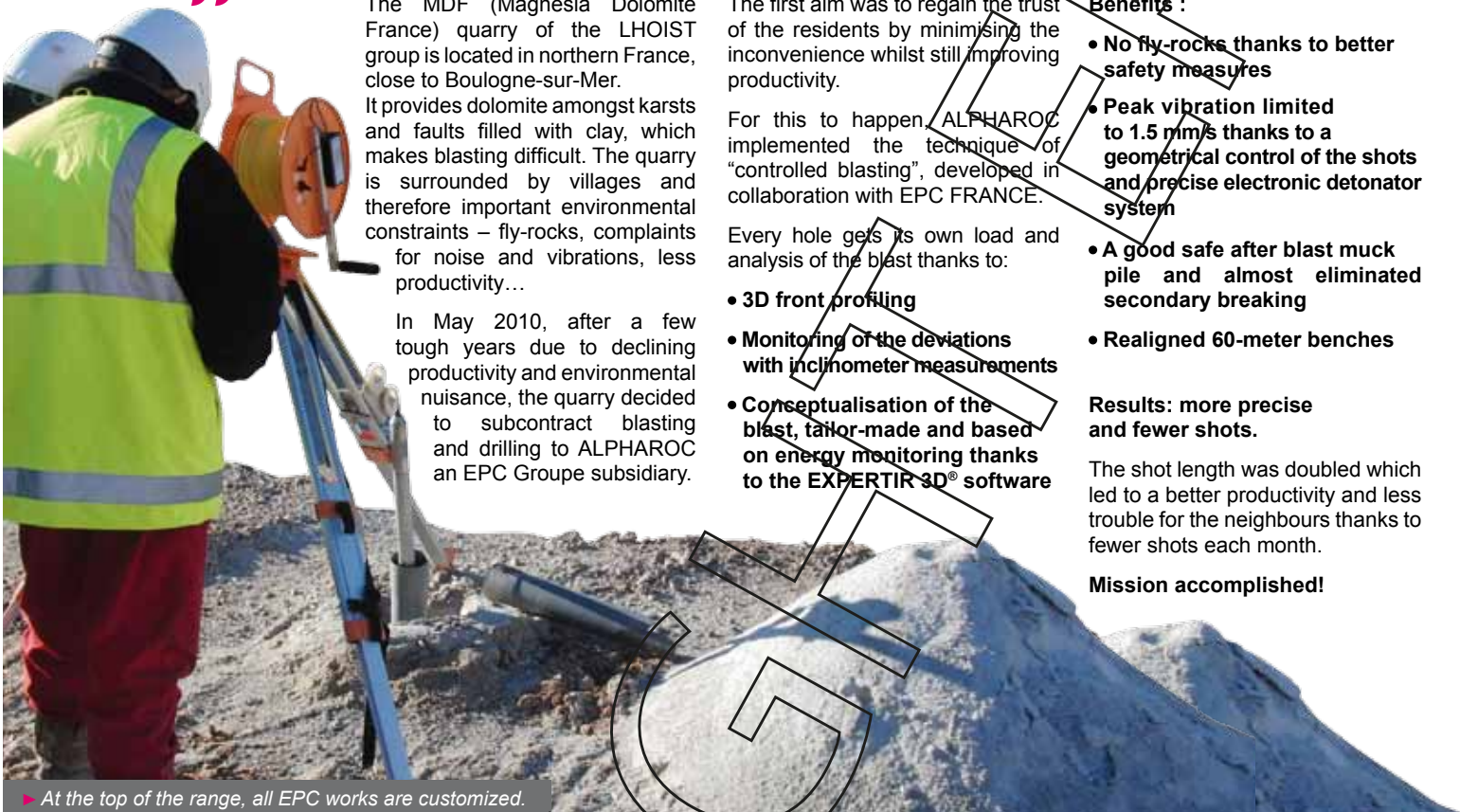
Benefits :

- No fly-rocks thanks to better safety measures
- Peak vibration limited to 1.5 mm/s thanks to a geometrical control of the shots and precise electronic detonator system
- A good safe after blast muck pile and almost eliminated secondary breaking
- Realigned 60-meter benches

Results: more precise and fewer shots.

The shot length was doubled which led to a better productivity and less trouble for the neighbours thanks to fewer shots each month.

Mission accomplished!



► At the top of the range, all EPC works are customized.

Drilling and blasting works

EPC CONQUERS SPACE BY BEING DOWN-TO-EARTH!

Blasting and stabilisation in Guyana with ALPHAROC.

On Friday October 21, 2011 at 7.30 am (local time), the Russian rocket Soyuz took off for the first time from the Guiana Space Centre. It was carrying the first two satellites for the European Navigation System called “Galileo”, competitor of the American GPS.

EPC Groupe took part in this adventure thanks to ALPHAROC, a subsidiary specialized in blasting and special works (stabilisation, shotcrete...)

Sébastien Lambert, General Manager of ALPHAROC, tells us about his part in the project:

“In 2006, ALPHAROC, in collaboration with Sofiter, blasted the flame trench for the Soyuz rockets on the Malmanoury site, north of the town of Sinnamary in Guyana. Vinci Grands Projets commissioned us.”

Can you explain what a flame trench is?

“It is a trench in the shape of a spoon which channels the exhaust gas during the rocket launch. The excavation required the blasting of 75 000 m³ of rocks down to 30 m below sea level.”

Sébastien Lambert concludes:

“With this big project, ALPHAROC showed its ability to carry out very specialised works, even in other countries than France. We are proud to be a part of the adventure and thank Vinci for their trust and commitment.”

Were there specific requirements?

The challenge of the project was to respect certain risks and absolute requirements: the correct trajectory of the rocket exhausted gases depends upon the perfect geometry of the flame trench. Also the risks with working below sea level meant flooding was a real possibility.

NUMBERS

- 3 000 m of micropiles to stabilize the ground
- 1st Russian rocket launched from Guyana on October 21 2011
- 75 000 m³ of mined rock down to 30 metres below sea level
- 7 500 m² of shotcrete at a depth of 10 cm



► One small step for man, one giant leap for EPC!



Reviewing our development and organisation

OLIVIER OBST'S VISION AS MANAGING DIRECTOR OF EPC.

Mr Obst, what is the origin of EPC Groupe?

"The EPC Groupe began in France, Italy and the United Kingdom over 100 years ago but is now a multinational organization centered around 3 continents: Europe, Africa and Asia / Middle East."

What are your main activities?

"We manufacture and develop explosives for all sectors and offer a complete integrated service package including drilling, blasting and engineering. Our teams are flexible and adapt to the local requirements no matter where they are. The demolition activity is complementary to the core activities enhancing the diverse nature of our business."

How is the group organised?

"In several areas:
 - South West Europe
 - North East Europe (UK + Ireland / Scandinavia)
 - Central Europe
 - Africa
 - Asia/Middle East"

What is changing in the group?

"In recent years we have managed real change, which has improved communication in the group, particularly through streamlining the legal structure. For example EPC DEUTSCHLAND is the result of the merger of several German companies, which has optimized the synergies available."

What are your plans for development?

"We are concentrating on the mining regions in Europe. We aim to strengthen our position through a logistical solution integrated with localized explosive production. EPC relies on the strategic value of each site."

How important is innovation?

"It is vital. Thanks to our loyal and competent management team EPC moves toward a complementary technical and cultural approach. Our main objective is to increase our capacity for research and innovation thanks to a dedicated competence center: EPC INNOVATION."

"EPC moves toward a complimentary technical and cultural approach."



CITIZEN OF THE WORLD!

EPC-UK: update

BEN AND EPC, A SUCCESS STORY.

Interview with Ben Williams, new Managing Director of EPC-UK, Area Manager, North West Europe (UK and Ireland).

“EPC-UK’s approach is to continue to influence the EPC Groupe through sharing best practice.”



What does your job consist of?

“I see my primary role as continuing the good work of my predecessor Ray Keen. The key initiative is the development of the EPC-UK brand across all our operating divisions and to coordinate our approach to the markets we serve. We need to deliver sustainable profitability by being the number one provider of explosive and chemical products with integrated solutions for our customers.”

How do you operate in an international and multicultural group?

“EPC-UK’s approach is to continue to influence the EPC Groupe through sharing best practice, maintaining a culture of continuous improvement and implementing key learning’s from our colleagues in the Groupe for the benefit of our business. This approach brings us efficiency and safety!”

Speaking of safety, EPC-UK Blasting Services won the National Safety Awards (« MPA » Mineral Product Association) three years running in 2006, 2007 and 2008, of which Ben is particularly proud. Ben also completed his NVQ level 5 in Health and Safety in 2010. In 2011 he was confirmed as a Fellow of the Institute of Quarrying, recognising his service to the industry.

What are your objectives for 2012? In the longer term?

“2012 will be a challenging year for EPC-UK. One of our initiatives is to introduce a new commercial approach, focusing on inter-divisional opportunities. For instance, the installation of an internet based solution for our key service customer will ensure faster reporting of key metrics as well as an integrated approach to scheduling our services. Cost saving is only one of the advantages this system has to offer. In parallel with this, we will continue the strive for zero harm in our business.” concludes Ben.

South West Europe

PEOPLE POWER!

Interview with Pascal Lacourie, Managing Director of EPC FRANCE, Area Manager, South West Europe.

What does your job consist of?

“I encourage everyone’s involvement to ensure a higher level of Security, Safety, Quality and Environmental Protection. My role consists of coordinating a constant upgrade of our teams’ skills, systems and performance to meet our clients’ needs. We offer a varied range of products (from standard to tailor-made) and services, from a simple delivery to a global operation where we meet our customers’ technical and economical requirements.”



What is the best way to operate in an international and multicultural group?

“We are working in a flat management structure within the group with great strategic responsiveness. Sharing our knowledge and experience leads to quality standards, efficient logistics and opportunities to increase export sales. Besides that, we have to make do with pyrotechnic regulations as well as technical and commercial challenges of each country.”

What are your objectives for 2012? In the longer term?

“We will pay attention to diversification opportunities (competence center in Saint-Martin-de-Crau) while remaining focused on our core business: blasting in mines, quarries and public works. Our expertise in pyrotechnics and special works will allow us to enlarge our scope in Europe and support the group and its projects.”

Introducing EPC NORDIC

SEE YOU AROUND THE WORLD!



Interview with Per Johanssen, Area Manager, North West Europe (Scandinavia).

What does your job consist of?

“I manage an operational organisation combining two legal entities with a total of 54 employees: EPC Norge AS with a 11,5 million Euro turnover and EPC SVERIGE AB with a 17 million Euro turnover. The Nordic countries are growing markets in a very competitive environment.”

What is the best way to operate in an international and multicultural group?

“We share our best practices learning from others who are doing similar work and are exposed to similar problems. In an international group like ours, communication is key and a common language is essential to communicate properly.”

What are your objectives for 2012? In the longer term?

“We will consolidate the growth on the Swedish market, notably by delivering the Dannemora mine project. We wish to develop in Norway by offering high-performance products such as Explus (high-energy emulsion replacing NG products). We would also like to start a new thinking, using self-assessment to make the best choices and stand out from the competition.”

ENVIRONMENTAL AWARD FOR EPC-UK!



► Bramble Island seals striking the pose!

EPC-UK Bramble Island, home to many rare breeds of fauna, is registered as a “Site of Special Scientific Interest”.

2011 got off to a great start with the company receiving an award for 15 years of work with Essex Wildlife Trust.

“I am really pleased that all the effort put into retaining the natural beauty of this site and its heritage has been recognized”

Ben Williams, Managing Director of EPC-UK.

Bramble Island is a rare and beautiful corner of England that has been a part of the EPC Groupe since 1905. All of its business activities are accredited to ENV ISO 14001 and the EBI staff plays an active role in managing the environment.

Our animal friends:

- A dry 2011 proved to be a good year for the vole population, which in turn resulted in a successful year for the barn owls, their natural predator.
- Signs of “Fisher Estuarine” moths, an extremely rare kind of moth, show that our efforts are worthwhile.
- Seven chicks from two broods of Marsh Harriers have also been recorded in the area.
- The Seal colony saw numbers fluctuating at between 70 to 100 with 109 counted as a peak - the numbers are made up of mostly of Common Seals with a few Greys making an appearance from time to time. This high number of seals concentrated into a relatively small area proves that the water and mud quality is of a high quality to sustain the eco system.

About the Saint-Martin-de-Crau lagoon

A SOURCE FOR NATURAL HISTORY!

The Saint-Martin-de-Crau lagoon, EPC FRANCE, was dug when the earth bund walls were built around our warehouses. The rain water cumulated to a pond due to the known impermeable soil of Crau.

“In the summer, no less than 300 migratory birds can be observed daily.”

In the last hundred years, a new ecosystem has appeared and enabled EPC to annually treat more than a million cubic metre of wastewater in a natural way.

The strict controls of both upstream and downstream ph levels, historically, has ment that nature itself has proven EPC’s success. The lagoon is well stocked with silver carp. Migrating birds also visit, such as Garganeys, Wild Ducks, Common Snipes, Grey Herons and Greater Flamingos, with over 300 at any one time during the summer season.

The ecosystem is now known and recognized by the administration. It constitutes a strong centre for the application towards ISO 14001 certification by EPC FRANCE, a goal for 2012.

NUMBERS

- **7 ha** of surface
- **2,5 m** maximum depth at its centre

Our certifications

EPC DEMOLITION

EPC CERTIFIED 100% EFFICIENT!

Our expertise and know-how is acknowledged.

EPC DEMOLITION combines OCCAMIANTE, OCCAMAT, 2B RECYCLAGE, ATD North-West and PRODEMO near Paris. These companies have 20 years experience, 350 employees, 20 of them engineers, and about 30 project managers. They operate within the French national territory.

Our missions:

Deconstruction, crushing work, explosive demolition, material recycling. Every job is unique with ever-changing constraints (works-at-height, dilapidated buildings...)

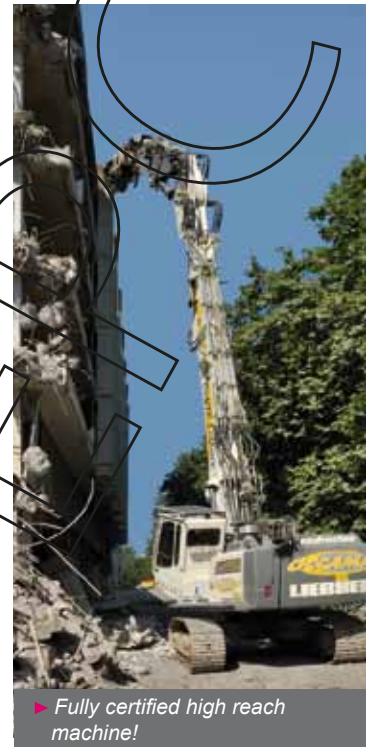
Our certifications:

EPC DEMOLITION has a very high level of certifications for its activities and its overall organisation : ISO 9001v2008 MASE, QUALIBAT 1512 / 1513 / 1153 / 1113.

These certifications give EPC 's demolition branch credibility by rewarding our people's skills and by strengthening our continuous improvement policy.

Next steps:

- To be recognised for our environmental initiatives and achieve ISO 14001.
- To be recognised for our community involvement. We will listen and take into account all the factors and stakeholders involved on-site: local residents, legal entities, employees, suppliers, etc leading to a Feasibility study for the ISO 26000 norm.
- To specialise in asbestos clearing > Qualibat 1513, planned for PRODEMO.



► Fully certified high reach machine!

Demolition works

ATD

THE DEMOLITION OF THE MEAUX BLOCK TOWERS.



► 7 months of preparation guarantees 8 seconds of success!

Hervé Delaporte

Technical Manager ATD / in charge of the operation :

“Everyone played their part in this precise operation with a great sense of professionalism. It was a great success, which made the use of a road sweeper almost pointless! It was a great leap forward for environmental impact control.”



Go to :

<http://www.youtube.com/watch?v=jYg1DhOP3W8>
or scan the code with your Smartphone to see the video of the demolition!

NUMBERS

- 405 kg of explosives on site
- 507 electronic detonators
- 1778 mechanical detonators
- 8 seconds for the whole operation
- 2 months were necessary to clear a total of 25 000 of debris

The water curtain in Meaux: a surprising system of water curtains positioned inside and at the foot of the towers to trap dust particles.

Sunday, June 26 2011, EPC FRANCE backed CFD Delair and ATD, a subsidiary of EPC Groupe was contracted to demolish 3 apartment tower blocks in Meaux, 50 km East of Paris.

The team tells us all about an impressive and technical day.

How did you organise the demolition?

“All 3 block towers were demolished using the implosion technique. The implementation of the ignition was a tricky part, using electrical detonators to set off non-electrical ones.”

How did you manage to trap dust particles after the implosion?

“The electronic ignition helped us synchronize a dual-system:

- In each block, 112 water-filled bags were placed on the ground and suspended by cables.

Each bag contained an explosive cartridge programmed to explode when the buildings went down.

- Outside the blocks, 24 inflatable water-filled pools were placed at the foot of the towers. The detonating cord in the pools exploded, creating a curtain of water that trapped the dust particles.”

Our development in Africa and the Middle East

MCS LAUNCHES ITS PRODUCTION IN SAUDI ARABIA.



In the summer 2011, MCS (Modern Chemicals and Services), an EPC Groupe subsidiary, launched the manufacture of explosives in 2 plants in the cities of Somman and Jamoom, Saudi Arabia. The first Mobile Production Unit was shipped from France, giving MCS the opportunity to offer a larger range of solutions for security and efficiency to a growing Saudi market.

RENEWING THE CBG CONTRACT.

After an international call for tender, NITROKEMINE and NITROKEM-FOR, EPC Groupe subsidiaries, signed a new contract for on-site explosive manufacture and for drilling and blasting with the CBG (Guinea Bauxite Company) mine in Sangaredi.

The mine is the biggest bauxite mine in the world (7.5 million m³ extracted each year). The 5-year agreement includes 100 full time employees and accounts for 50-million-dollar of combined turnover.



FOCUS ON... Training

EPC subsidiary specialised in explosives

NITROKÉMINE GUINÉE

ORGANISATION AND SECURITY FIRST OF ALL!



► The team rallies for the weekly briefing.

NITROKÉMINE GUINÉE has been a forerunner in safety management. Its General Manager, Vincent Austin, shares his 8 years of experience:

What is your main objective?

"We initiated two kinds of meetings: the 'cascading meeting' and the 'weekly briefing'.

- Each month, managers get together in a '**cascading meeting**' to discuss subjects concerning the whole staff. Managers are then able to pass the information onto operating teams via middle-management. Safety, security and many other subjects are discussed.

- The '**weekly briefing**' is held by Alpha Bah, the Safety and Security Manager. It is an informal meeting where everyone sits in a circle and listens to the person talking while Alpha Bah writes down what is being said. This allows manage-

ment to take measures they think are most adequate."

What are your goals for 2012? Long-term?

"To keep it up! This meeting system has proven efficient. Since 2002, 14 million tonnes of ore have been blasted annually (4 421 blasts), without any accident neither onsite nor at the plant."

“ Since 2002, 14 million tonnes of ore have been blasted annually without any accident onsite nor at the plant. ”

EFFICIENT METHODS AND TOOLS FOR A NEW KIND OF CUSTOMER SUPPORT.



Interview with Ricardo Chavez.

Can you tell us more about your job?

"My job is to advise our customers and ensure the safe implementation of products at optimum level - especially in quarries. We supply them with technical advice and service in mining and quarry engineering by taking into account safety, productivity and environmental constraints. Previously, we developed efficient and innovative techniques such as the geometrical measurement of rock massifs with dedicated software. We also train and drive a team of technicians and engineers. They are the ones who work with the clients, which is why it is absolutely necessary that they know how to use each and every tool perfectly!"

Is there a specific follow-up for complex projects?

"Yes. Complex works need systematic support when the mining is being designed or carried out. For instance, the Lafarge quarry in Givet (Ardennes, France) lies in a heterogeneous massif (earth, faults, forty-degree inclined front) and is surrounded by houses. We implemented a complete measurement of blasts to guarantee safety and to reduce vibrations. Our role is also to show our clients that quality mining has its benefits."

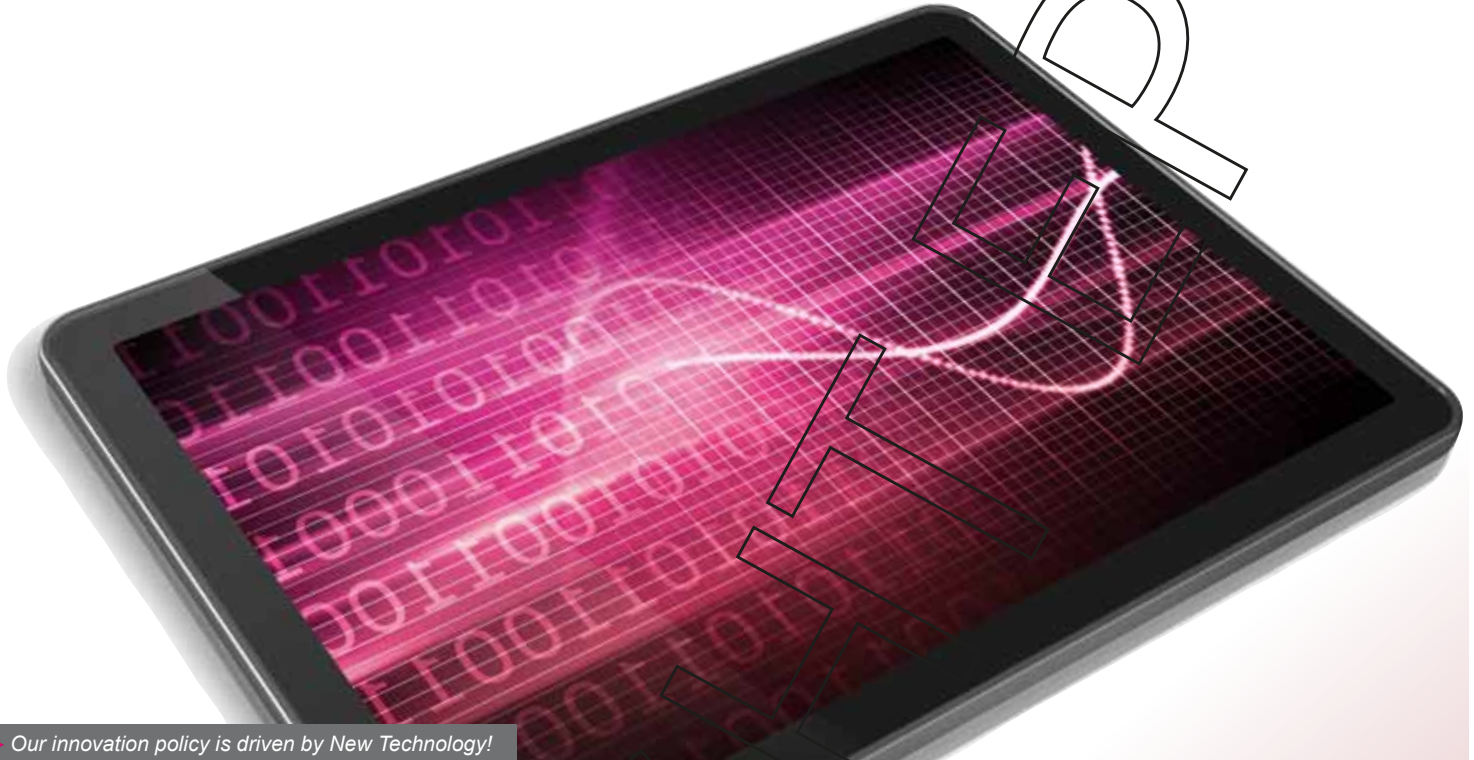
How do you handle safety issues throughout the operations?

"We set up strict processes alongside continuous training and monitoring of our operators, and by enforcing the rules established by EPC Groupe. Our tools and methods guarantee an ever-growing level of safety."



► Ricardo Chavez, Technical Manager EPC FRANCE.

LOOKING FOR TECHNOLOGICAL EFFICIENCY.



► Our innovation policy is driven by New Technology!

Interview with Jim Eaton.

EPC Groupe has always focused on innovation which naturally led to the creation of the EPC INNOVATION subsidiary. The company, based in France and England, employs fifteen engineers (electronics, mechanics and chemists) managed by Jim Eaton.

Mr Eaton, what are the missions of EPC INNOVATION?

"We support EPC Groupe in its development and technological progress. Our central platform coordinates - within the Group - technical design and R&D studies, manufacture and delivery of civilian explosives."

Do you focus on particular avenues of research?

"Yes, we focus on 3 main avenues of research to improve customer service (efficiency, profitability, etc.):

- The quality of explosive products,
- The optimisation of explosive manufacture,
- The improvement of production techniques and deliveries to worksites."

Can you tell us about one of your recent projects?

"We developed an option called 'variable density', which is available on every Mobile Manufacturing Unit (MMU) and can be added to our old trucks. The drill and blast designer can make the blast density vary inside the hole, which allows the energy to be concentrated in strategic places with no loss and no side risks. Therefore we ensure the blast is optimised, safe and efficient. This has the advantage to substantially reduce the production of fines, implying additional costs for quarry managers."

Are you currently exploring other innovations?

"We wish to optimize EPC's MMU technology to gain reliability and maintainability. Customers appreciate data traceability. We are testing a programmable logic controller (PLC) which can record all our loads data. Furthermore, you will soon be able to download the parameters necessary to design a blast onto a USB flash drive then upload them onto the truck's controller."

“We are testing a programmable logic controller (PLC) which can record all our loads data.”



► Jim Eaton, Manager EPC INNOVATION

EPC-UK TRANSPORT IS ON THE ROAD TO SUCCESS.



► EPC shows its true colours with a brand-new fleet!

Creating an accessible and reliable transport network.

Created in January 2011, EPC-UK TRANSPORT is the newest division of EPC-UK with operations based at Rough Close Works, Alfreton and Bramble Island, Great Oakley.

It places the new transport and logistics network for hazardous, sensitive or protectively marked products.

“EPC offers a complete transport and logistics solution for hazardous, sensitive and protectively marked products.”

The EPC fleet of vehicles includes tractor units, box trailers, skellis, low loaders, road tankers and other specialist vehicles. Utilising group resources in both Bramble Island and Alfreton, the transport division has access to a bonded warehouse facility and storage areas equivalent to approximately 900 metric tonnes of net explosives quantity (NEQ).

EPC-UK TRANSPORT strategy is twofold. The initial goal was to have a working network of vehicles to deliver products to EPC-UK ADDITIVES, EPC-UK EXPLOSIVES and EDSL customers with specialised logistics services. Secondly, EPC-UK TRANSPORT is aimed at taking to the mar-

ket place the new transport and logistics network for hazardous, sensitive or protectively marked products. This new division has given EPC better control over customer service by bringing reliability, self-sufficiency and synergies between divisions enhancing profitability.

FLASH: Group's news

“ALPHAROC” AND 4 OTHER COMPANIES HAVE MERGED.

From June 15 2011, the 5 French drilling/blasting and special works companies of the EPC Groupe - ALPHAROC, DTS, FMO, SIMECO and PYRENEES MINAGE - have merged under the name ALPHAROC. The company has a workforce of 150 and a fleet of 45 units.

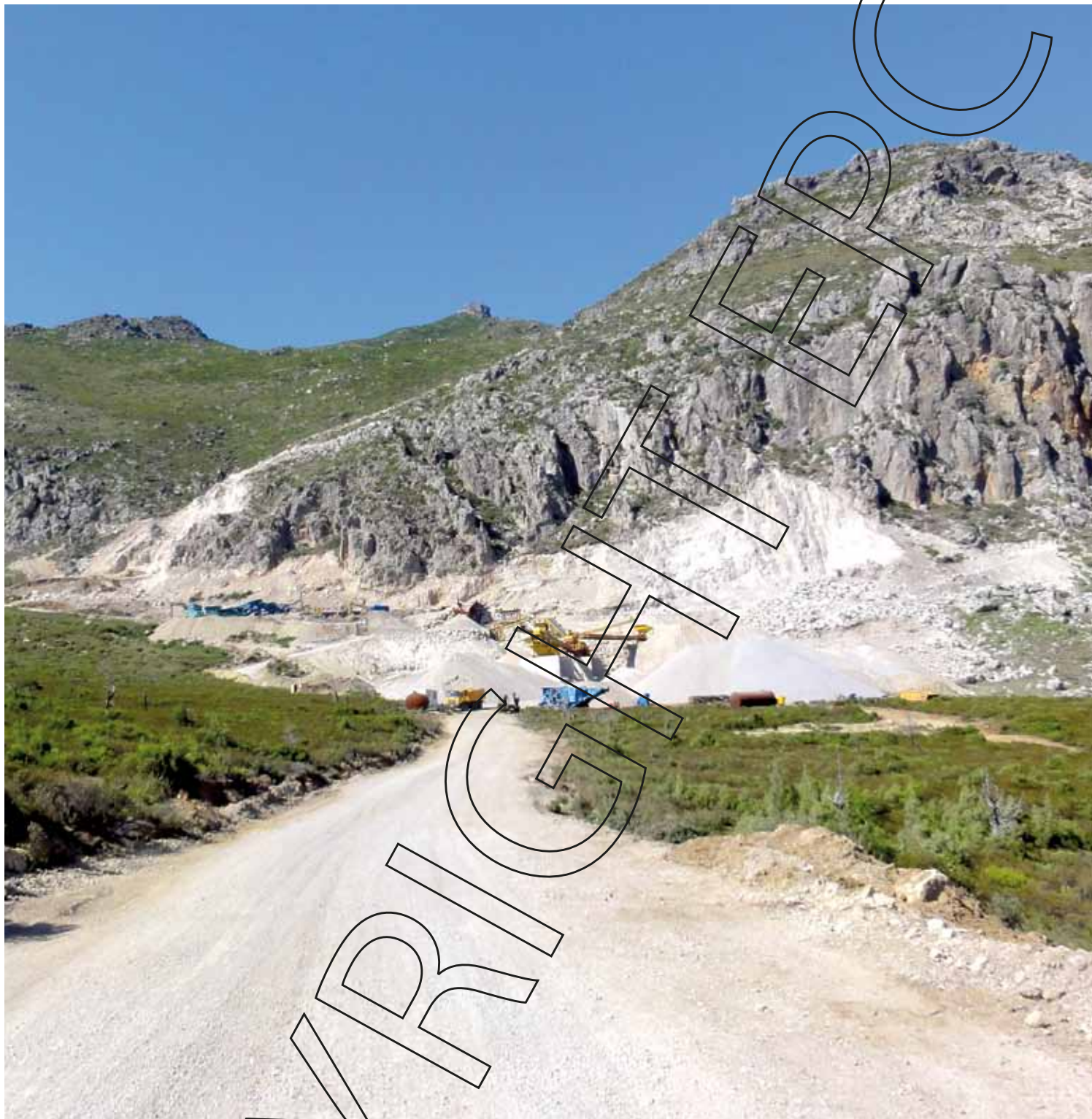
This merger enables ALPHAROC to pursue the 5 activities in the whole of the French Territory as well as internationally: blasting in quarry, major projects and public works, as well as in confined areas and special foundations, the manufacturing of explosives and their on-site use for both underground and surface work. The expansion gives ALPHAROC a better ability to react.



TRAINING DEPARTMENT TO SUPPORT SUBSIDIARIES.



From October 10 to October 14 2011, Jean Louis Samiez, Training Manager, EPC FRANCE, held a training course for a CPT - Blasting engineer's Certificate - for 18 trainees in Libreville, Gabon. The training was organised by SOGABEX/EPC GABON, an EPC Groupe subsidiary. Advanced training courses will be held in the future.



EPC
GROUPE

Société anonyme d'explosifs et de produits chimiques

61, rue Galilée
75 008 Paris

Tel: +33 01 40 69 80 00
Fax: +33 01 40 69 80 50

www.epc-groupe.com

N° 1 – First Semester 2012


**Publishing Director
and Editor-in-chief:**
Paul de BRANCION

Vice Editor-in-chief:
Aline MUNOZ

Editorial:
Aline MUNOZ, Bertrand PUGNY,
Thierry ROUSSE, Ben WILLIAMS
et Xavier TISSERAND (copywriter)
Translation: Chloé MERLET

Photo credits:
Adeline BOMMART, EPC FRANCE,
EPC MAROC, EPC NORDIC, EPC-UK,
GROUPE EPC, OCCAMAT, Thierry
DUVIVIER, Thinkstock, VINCI.

Design and execution:
Agence **S16ZE** - NANTES
EPC Groupe - Société Anonyme
d'Explosifs et de Produits Chimiques
RCS Paris B 542 037 361
61 rue Galilée, 75008 Paris.

 Printed with paper from recycled
fibres (FSC).